

# NETSCOPE *Analyser*

**NetScope Analyser is an easy-to-use network monitoring solution that provides per-second visibility into network WAN traffic both in real time and historically.**

## Per second network visibility

When the applications and services that business depends upon compete for available bandwidth the end result can be intermittent and short duration network logjams which can lead to severe network degradation.

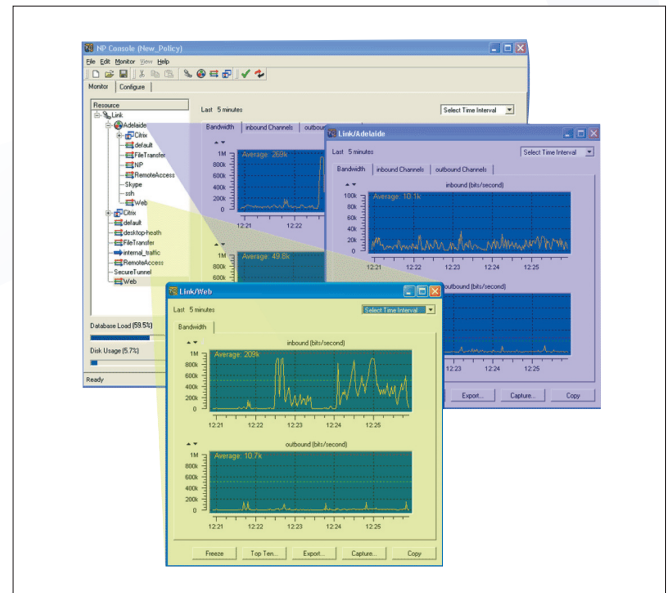
Without management and insight into network activity solving these problems is extremely difficult, you are essentially operating blind. Critical IT infrastructure can quickly become a drain on resources, rather than presenting new opportunities to gain strategic and competitive advantage.

NetScope Analyser offers superior analysis of network activity, providing insight that goes well beyond what simple sniffers can offer.

**Drill down capabilities** help you get to the core of the issue, by zooming in on and isolating problem traffic.

**Per second granularity** provides an unsurpassed level of detail and importantly, this per second resolution is retained for historical analysis. Without this fine granularity network issues can be extremely difficult to track. Traffic averaged over minutes is simply not good enough.

As business networks evolve and become ever more complex, staying in control and ensuring peak performance means being able to see exactly what is happening with network traffic. NetScope Analyser gives you the insight to regain control of your network and to keep business critical applications such as VoIP, Citrix, and ERP operating optimally. Combined with detailed historical records, NetScope Analyser places you in an ideal position to make informed decisions about bandwidth needs of your organisation both now and in the future.



*Drill down and zoom in on individual data streams ( colour emphasis added )*

### ★ Key features and benefits

- **One second resolution.** Interactive applications are badly effected by short duration traffic spikes on your network. These incidents occur on an irregular basis and are difficult to trace. With NetScope Analyser, you can see the traffic on a per second basis to quickly identify the cause of the spikes. This kind of analysis is not possible with the previous generation of analysis tools that average traffic over periods of minutes.
- **Remotely accessible.** NetScope Analyser can access traffic data from anywhere. The network manager in head office or on the beach in front of his laptop is able to diagnose traffic problems anywhere on the network even after the symptoms have disappeared.



### ★ Key features and benefits

#### → One easy to install and use application.

With NetScope Analyser, you are immediately effective and able to view all aspects of your network within minutes. Most importantly there is no huge learning curve or accredited training course that you will need to do to get up to speed.

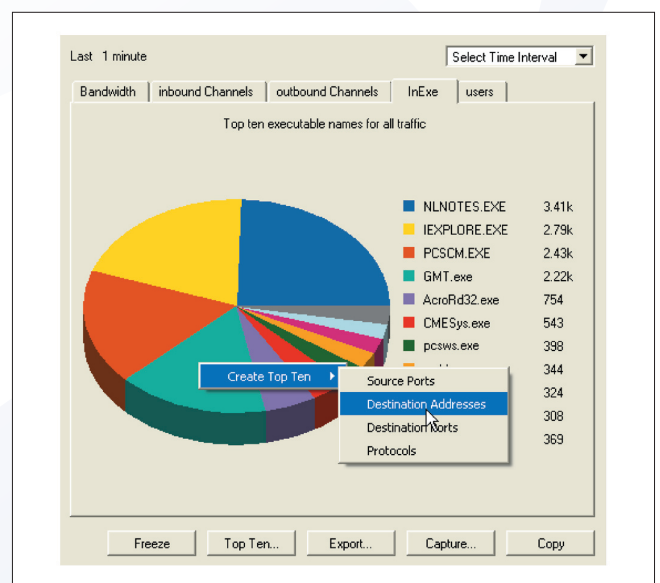
→ **Extremely valuable support tool.** Network problems can be extremely difficult to diagnose. Having the visibility that NetScope Analyser provides across your network means finding and resolving problems is quick, easy and can be performed remotely.

→ **Drill down capability.** NetScope Analyser allows you to see how your Network traffic is made up. With its unprecedented ability to "drill down" into the traffic you can isolate problems and deal with them.

→ **Optimise your bandwidth expenditure.** Armed with detailed knowledge of Network traffic content, you can then fine tune your bandwidth or QoS solution to match your real requirements and eliminate bandwidth overspend.

→ **No downtime to install.** NetScope Analyser is totally non invasive. To install simply configure, plug into a mirror port on your switch and start looking at the traffic.

→ **Get what you pay for.** NetScope Analyser gives you the tools to prove that you are getting exactly what your bandwidth provider promised.



## About TurboSoft Networks

TurboSoft Networks is a part of TurboSoft Pty Ltd, a privately owned 100% Australian company with over 20 years experience as a leading manufacturer of enterprise wide connectivity and network performance solutions.

Today TurboSoft markets its products in more than 30 different countries with numerous offices, resellers and distributors spanning across all parts of the globe. Our customers include an enviable list of local & international clients from diverse range of market sectors.

[www.turbosoftnetworks.com](http://www.turbosoftnetworks.com)

Australian FreeCall: 1800 628 646

US FreeCall : 1 800 519 9501

NZ FreeCall : 0508 443 467

© Copyright TurboSoft Networks Pty Ltd. All other trademarks and company names are copyright of their respective owners.